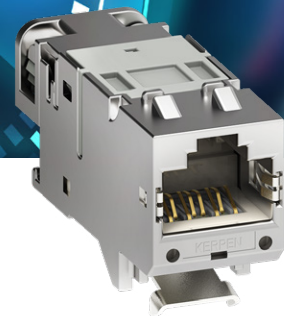


EN

INNOVATION MC45 Pro Plus

*MC45 Pro
The plus for a perfect
data installation*



*Category 6A
360° shield contact*

+ A PLUS IN PERFORMANCE

The electrical values of the **MegaLine® connect 45 Pro Plus** will convince everybody. The GHMT confirms: **MC45 Pro Plus** is significantly better than required by the Cat. 6A standard.

+ A PLUS IN SPEED

Easy installation: As already known from the modules of the **MC45 Pro series** installation is child's play. Insert the wires, fix the cable and crimp them. It could hardly be easier. And this all without any special tools.

+ A PLUS IN FLEXIBILITY

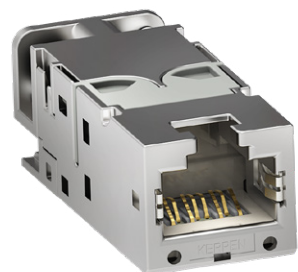
Thanks to the internationally usable keystone format, the **MC45 Pro Plus** can be used almost everywhere. And in case of shortage of space, the little brother in the „ELine“ format is available immediately. This way, up to ports48 can be realized on one RU.

+ A PLUS IN SATISFACTION

Easy installation, universal applicability and highest technical performance simply leave nothing to be desired.



*Category 6A
360° shield contact*



*Category 6A Eline
the compact format
for up to ports/RU 48*

ORDER INFORMATION

▶▶▶ Ask your distributor about MC45 Pro Plus. You can find your distributor at: kerpen-data.com/sales-network/