

EN

# INNOVATION MC45 Pro Plus

*MC45 Pro  
The plus for a perfect  
data installation*



*Category 6A  
360° shield contact*

## + A PLUS IN PERFORMANCE

The electrical values of the **MegaLine®connect 45 Pro Plus** will convince everybody. The GHMT confirms: **MC45 Pro Plus** is significantly better than required by the Cat. 6A standard.

## + A PLUS IN SPEED

Easy installation: As already known from the modules of the **MC45 Pro series** installation is child's play. Insert the wires, fix the cable and crimp them. It could hardly be easier. And this all without any special tools.

## + A PLUS IN FLEXIBILITY

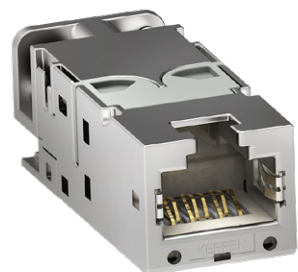
Thanks to the internationally usable keystone format, the **MC45 Pro Plus** can be used almost everywhere. And in case of shortage of space, the little brother in the „**ELine**“ format is available immediately. This way, up to ports48 can be realized on one RU.

## + A PLUS IN SATISFACTION

Easy installation, universal applicability and highest technical performance simply leave nothing to be desired.



*Category 6A  
360° shield contact*



*Category 6A Eline  
the compact format  
for up to ports/RU 48*

## ORDER INFORMATION

▶▶▶ Ask your distributor about MC45 Pro Plus. You can find your distributor at: [kerpen-data.com/sales-network/](http://kerpen-data.com/sales-network/)