

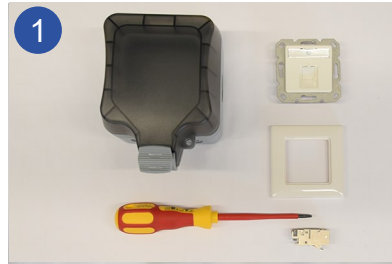
VarioLine® Protect Junction box IP66

to accommodate a flush-mounted socket

Mounting instruction



Package Contents / Scope of Delivery
Protected IP66 housing with cable gland, sealing plug and extensive mounting material.

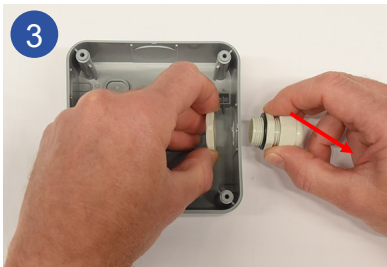


Required materials and tools:

- Connect45 wall-outlet UP/50 1 fold
- Connect45 Pro faceplate 80x80
- Connect45 Pro Plus RJ45 Cat. 6A jack
- robust outdoor RJ45 patchcord
- Screwdriver



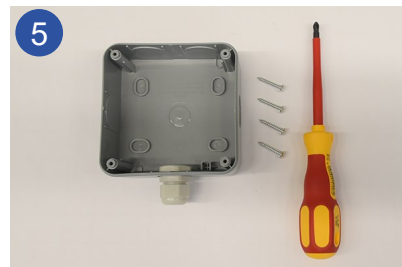
Break out the prepared cable entry on the bottom of the enclosure.



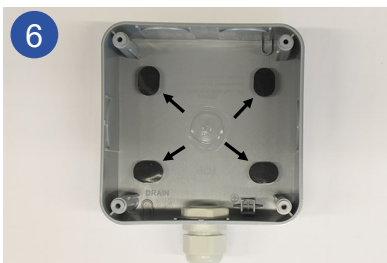
Attach one cable gland to the enclosure with the nut.



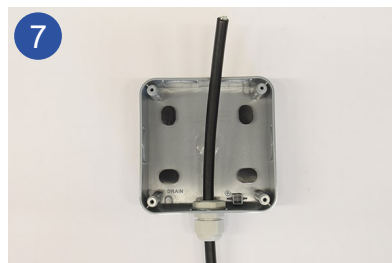
Tighten the nut of the cable gland firmly with channellock plier.



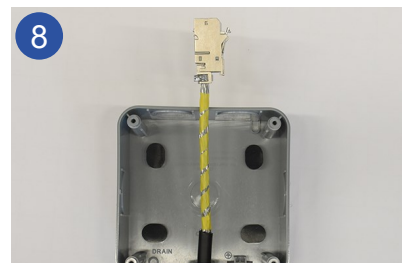
Install the enclosure to the wall with screws and dowels properly.



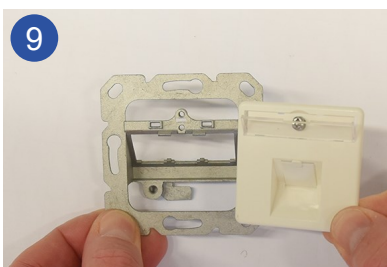
Close the mounting holes inside with the rubber sealing plugs.



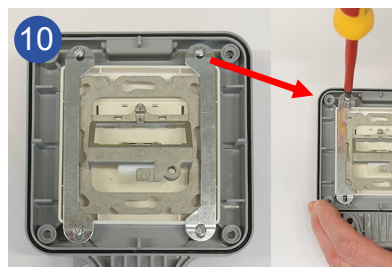
Insert the data cable into the enclosure and seal the cable gland by closing the union nut.



Assemble the Connect45 Pro Plus jack at the cable - make sure that there is a cable spare length of approx. 15 cm.



Detach the central plate from the wall-outlet and install the Connect45 Pro faceplate underneath.



Mount the Connect45 wall-outlet with faceplate into the housing cover from rear side.
To do this, use the two mounting brackets and the four short self-tapping screws.

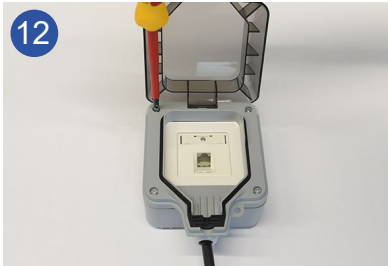


Insert the jack into the mid of wall-outlet until the lower mounting spring clicks into place in the metal frame.

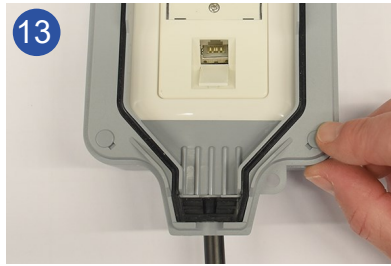
VarioLine® Protect Junction box IP66 to accomodate a flush-mounted socket



Mounting instruction



Install the housing cover on top of the enclosure - make sure that the cable inside is not squeezed and routed without buckle.



Mount the cover with the four long self-tapping screws and seal the openings with the four grey plastic plugs.



Connect the patchcord and run it out of the enclosure in the middle of the gasket an the bottom opening.



Close the cover until it clicks firmly into place at the bottom closure - make sure that the connection cable is routed in the middle of the opening without squeezing.



To open the cover, unlock the latch at the closure.

Product views



protect

Installation instruction
Montageanleitung

www.kerpen-data.com/protect-service/

Assembly videos and further information about the product, accessories and our solutions.

Dimensions: 482.5 x 43.5 x 125.0 mm (W x H x D)

Colour housing: grey

Colour cover: transparent, tinted

KERPEN DATACOM GmbH Zweifaller Str. 275-287 D-52224 Stolberg

Tel. +49(0)2402-17-0 / E-Mail info@kerpen-data.com / www.kerpen-data.com

We reserve the right to make technical modifications; typographical errors and mistakes expected